



Fig. 1. Brass monkey.



DESIGNS

CAMPAIGN CHESTS

During the 30 months that I spent researching campaign furniture for my book, I collected thousands of images from friends, auction records and antique stores. Many of these images were used to train my eye so I could spot typical and atypical forms during the building process.

As a furniture-maker, I think it's useful – almost necessary – to collect a library of furniture images that you use to inspire your own designs and get you back on track when you design something that looks terrible.

The following pages contain only a fraction of the images I collected during my active research. Most of these images are widely available through other sources. Some were sent to me via e-mail Other images were taken by myself personally.

I don't claim any copyright to this document or these images. Feel free to share and use them to become a better designer, or to hone your eye when it comes to campaign-style furniture.

Christopher Schwarz
January 2014

CAMPAIGN FURNITURE















JAMES D.
JULIA
Inc.
FURNITURE MERCHANT







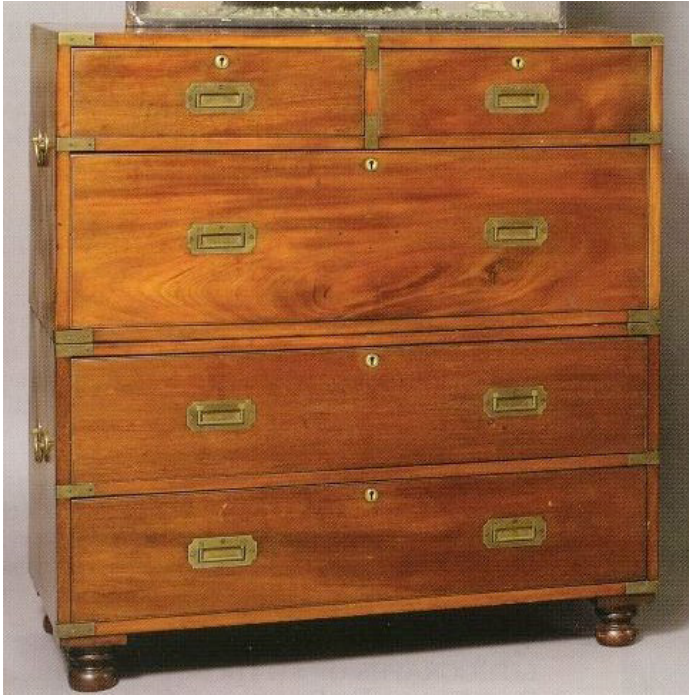
CAMPAIGN FURNITURE

























CAMPAIGN FURNITURE

























































© Christopher Clarke Antiques



© Christopher Clarke Antiques



© Christopher Clarke Antiques















